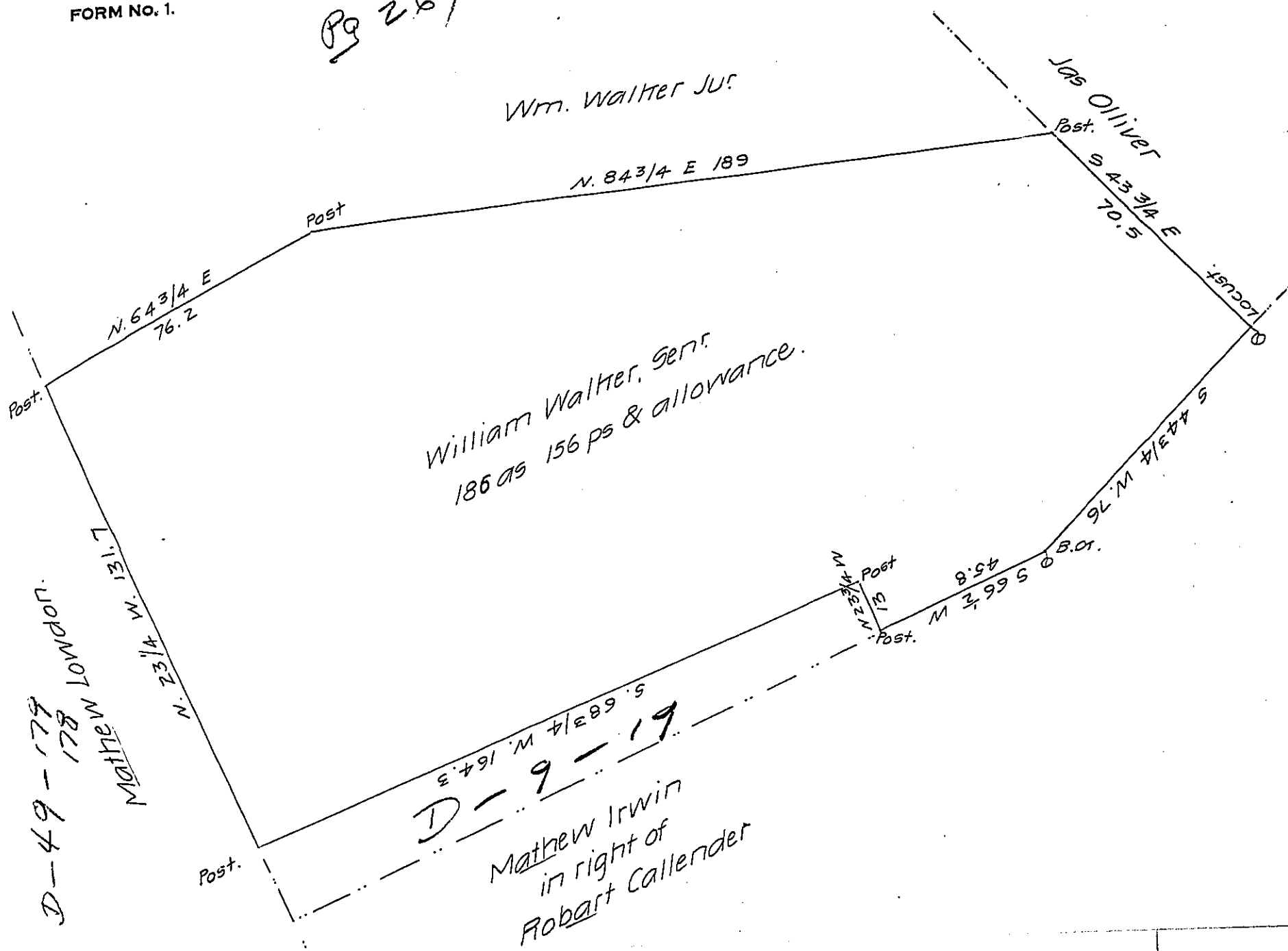


FORM No. 1.

Pg 264



Draught of 186 acres and 156 perches & the usual allowance of six Pr. Ct. for roads &c. situate in Eastpennsboro Township, Cumberland County. It being part of 202 acres and 117 perches & the usual allowance Survd in pursuance of an order of survey granted to Wm. Walter Senr No. 3214 datd March 26th Adm 1767 Resurd & divided 27 July Anno Domini 1822.

Saml Ruby, D.S.

To Samuel Cochran Esquire  
Surveyor General.

IN TESTIMONY that the above is a copy of the original remaining on file in the Department of Internal Affairs of Pennsylvania, made conformably to an Act of Assembly approved the 16th day of February 1833, I have hereunto set my hand and caused the Seal of said Department to be affixed at Harrisburg, this fourth day of September 1907

*Henry Howell*  
Secretary of Internal Affairs.